



# Pure performance

STEADY™ 1300 SERIES

**Steady**<sup>™</sup>  
a xylem brand



# Available

**EASY TO SELECT, CLOSE AT HAND, RIGHT PUMP FOR YOUR NEEDS**

# Value for money

**EFFICIENT, POWERFUL**

# Reliable

**SOLIDS HANDLING, CONTINUOUS RUNNING**

# Readily available pure performance pumps

Steady™ 1300 is a series of submersible pumps that deliver pure performance at outstanding value.

Combining performance and quality in a convenient, value for money package, these pumps will help ensure the smooth running and profitability of your operation. This is why Steady is the ideal pump for sewage and surface wastewater within municipal and commercial building applications.

Moreover, Steady makes your choice of pump easy, it only requires three straightforward steps. We have the right pump for your needs with high availability to support your business.

The Steady 1300 series is based on technology developed and tested in tough environments the world over. That's why you can count on these pumps for trouble-free, reliable operation.

The hydraulic design of the pumps has been proven to reduce clogging and maintain efficiency. These pumps simply work-and keep on working. Day in, day out, and under harsh conditions, they won't let you down-they're Steady.

# Available Value for money Reliable

With a variety of model and Steady 1300 impeller combinations, it's easy to find a pump for your needs. The optimized impeller design ensures efficient solids handling capability, smooth operation, and increased savings from reduced maintenance costs and lower energy consumption.

All pumps in the series feature a motor designed for reliable operation in submersible applications. The motors have F-class insulation, which allows for

continuous running without overheating, ensuring optimal cooling and long lifetime. Additionally, the pumps can handle 15 starts per hour without problem.

Typically these pumps are installed in permanent installations. However, some models have the option of a free-standing installation so that the pump can be easily moved from one site to another. See methods of installation (page 6) for further reference.

## Application areas

### **Municipal:**

- Domestic sewage pumping stations
- Wastewater pumping stations
- Retention basins
- Storm water pumping stations

### **Commercial building:**

- Drainage water
- Domestic sewage pumping stations
- Ground water

# Tough to beat

## **Robust**

All components are made from robust materials for easy maintenance and long life.

## **Powerful**

Motor is specifically designed for reliable operation in submersible applications. It can run continuously without overheating – a true workhorse.

## **Durable**

Heavy-duty bearings with long life provide peace of mind.

## **Environmentally friendly**

Cooling system is designed to use the surrounding media to cool the pump; no use of environmentally hazardous fluids such as oils.

## **Safe and straightforward**

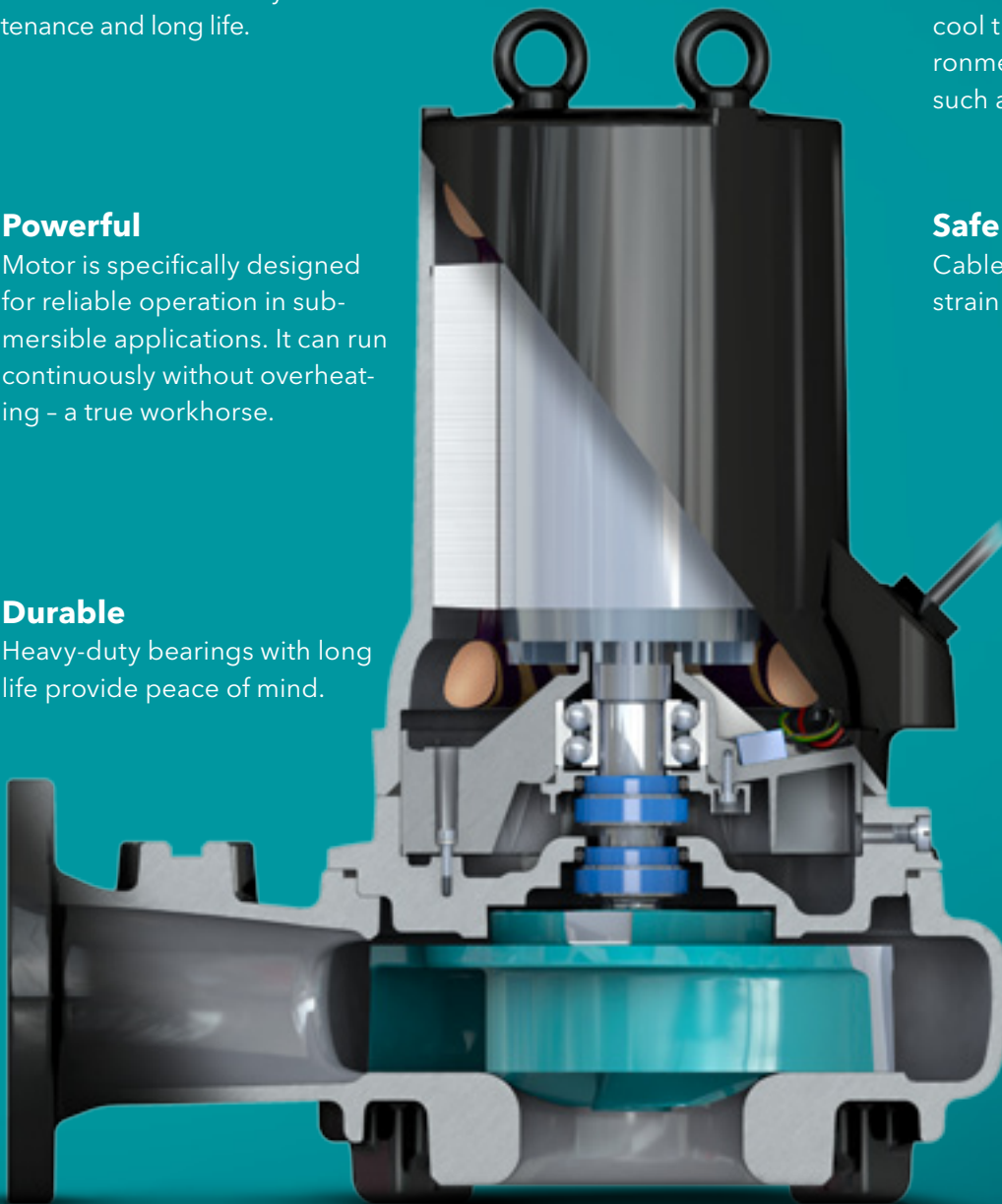
Cable entry prevents both cable strain and leakage.

## **Smooth**

The double mechanical seal provides extra reliability and protects against leakage.

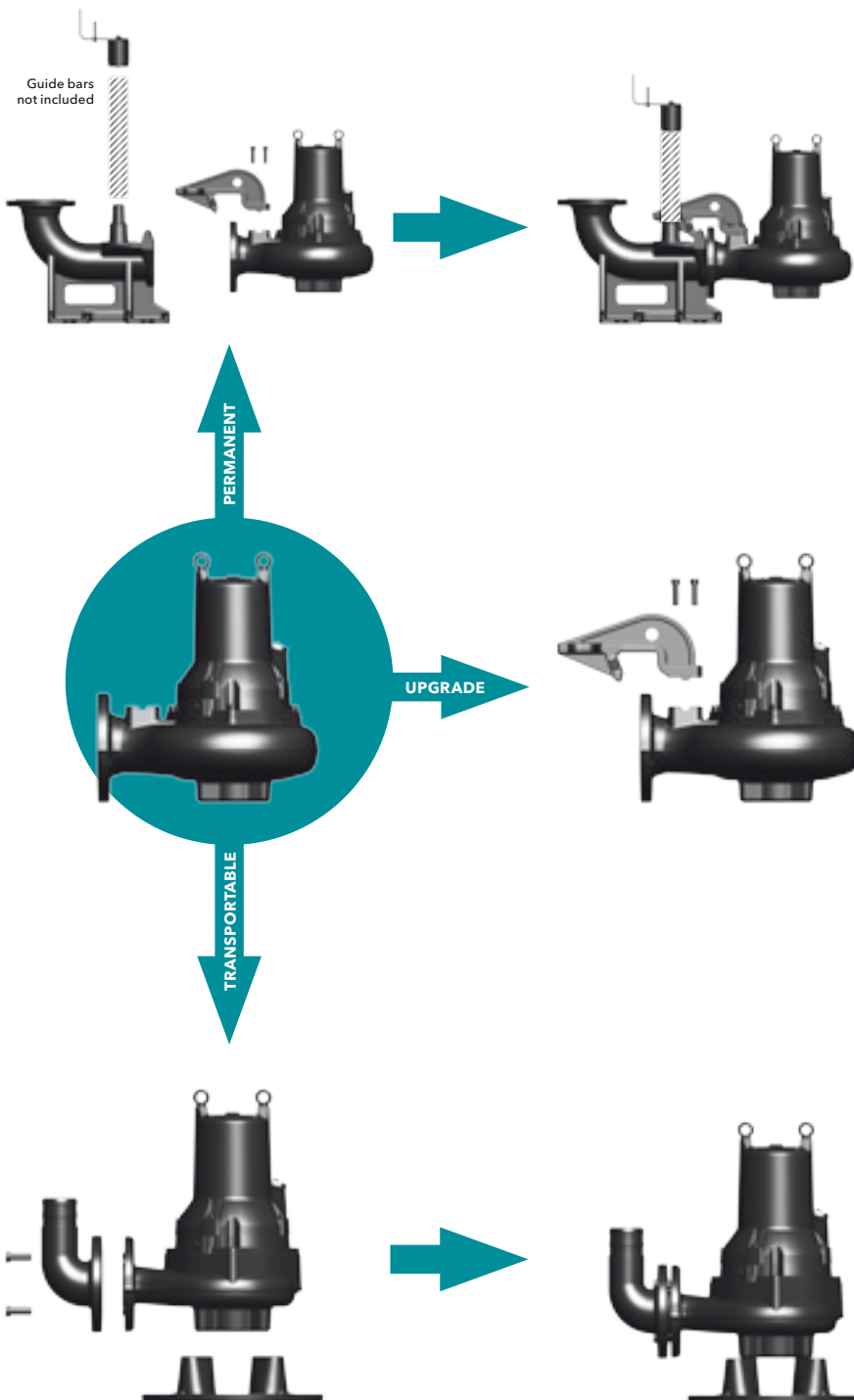
## **Flexible**

Drilled pump housing, ready for any installation method.



# Installation methods and accessory kits

The Steady 1300 series is designed to fit your needs. You start with a bare pump and order the right kit depending on your desired installation method.



## Wet-well kit (W)

The pump is installed with twin guide bars on a discharge connection.

Kit contents:

- Discharge connection
- Anchor bolts
- Guide claw with bolts
- Upper guide bar bracket with bolts

## Replacement kit (R)

Simple kit to replace an old pump or upgrade to a larger model

Kit contents:

- Guide claw with bolts

## Free-standing kit (H or T)

Ideal for portability

Kit contents:

- Hose (H) or threaded (T) connection
- Stand with bolts

# Selecting & ordering

## Configure your product order and generate order number

We've made it easy for you to select and configure your pump with appropriate accessories; it's done in just three simple steps and you build your order number as you go.

**1** Select the pump model ideal for your needs from the product pages that follow.

**2** For every model and choice of outlet dimension there is a partially filled order number. Configure your pump from the relevant selection tables and you will automatically get the information to build and complete your order number as you go!

Model
Model variant
Outlet dimension (nominal, mm)
Pole
Frequency (5=50, 6=60)

1320
M
-100
X
.453
.
---
.
---
/
-

Selected model
A
B
C
D

The screenshot shows the product page for the Steady 1320 Non-clog pump. It features a central product image and several data-rich sections:

- Pump data table:**

Model	1320M	1320S	1320E
Outlet dimension (mm)	100	150	200
Power (kW)	0.453	0.75	1.1
Flow rate (m³/h)	1.5	2.5	3.5
Head (m)	5	7	10
- Performance curves:** A graph showing flow rate vs. head for different models and outlet dimensions.
- Pump dimensions (mm):** Technical drawings and tables for various outlet sizes.
- Installation kit selection table:**

Kit	Power (kW)	Flow rate (m³/h)	Head (m)
A	0.453	1.5	5
B	0.75	2.5	7
C	1.1	3.5	10

Four callout boxes are overlaid on the page:

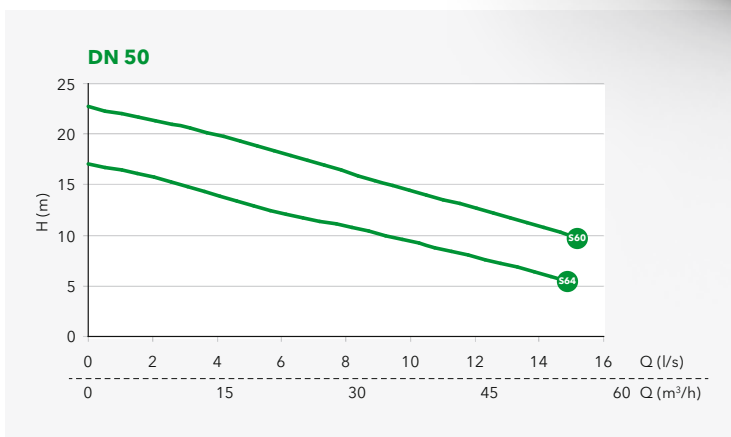
- C Voltage:** Points to the 'Voltage' field in the 'Pump data' table.
- B Curve ID:** Points to the 'Curve ID' field in the 'Performance curves' section.
- A Installation code:** Points to the 'Installation code' field in the 'Installation kit selection table'.
- D Cable length:** Points to the 'Cable length' field in the 'Installation kit selection table'.

**3** Select your accessory kit from the relevant accessory selection tables, i.e. installation kit. Please make sure that your configuration corresponds to the right order number and accessory kits and you are ready to order.

# Steady™ 1310 Non-clog



## Performance curves



## Selection table

Model	DN	Installation*	Pole	Freq (Hz)	Phase	Power (kW)	Curve no	Voltage	Cable	Order number**
1310S	50	W, T	2	50	3	2.4	S60, S64	415	10	1310S-50-.253-....-./10

\* W=Wet well only.  
T=Free-standing threaded outlet, only.

Pumps come standard with thermal contacts.  
\*\* For information on configuring the right order number, see page 7.



## Pump data

Model	1310S
Impeller Type	Non-clog
Outlet size (mm)	50
Weight (kg)	35
Pole	2
Insulation Class	F
Starts per hour	15

## Motor data

Voltage	415 V
Phase	3
Model	1310S
Starting Amps (A)	23
Full Load (A)	4.7
Full Load Power Factor	0.90
Connection	Y
Cable	7G1.5

## Material data

Impeller	stainless steel
Pump housing	grey cast iron
Stator housing	grey cast iron
Shaft	stainless steel
Inner mechanical seal	carbon/aluminum oxide
Outer mechanical seal	cemented carbide/aluminum oxide
O-rings	nitrile
Cable sheathing	nitrile

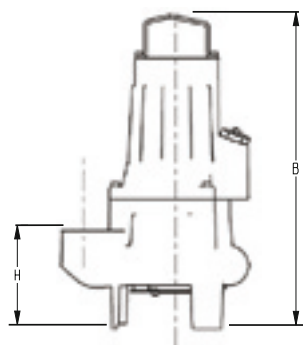
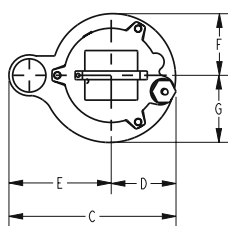
## Process data

Max submergence	20 m
Max fluid temp	40 C
pH range of pumped liquid	5.5 - 14

## Power cable data

Cable type (mm2)	7G1.5
Outer Diameter (mm)	16.2
Weight (kg/m)	0.33

## Pump dimensions (mm)



	1310S
A	N/A
B	503
C	309
D	119
E	190

	1310S
F	115
G	125
H	157
J	N/A
K	N/A

## Installation kit selection table\*

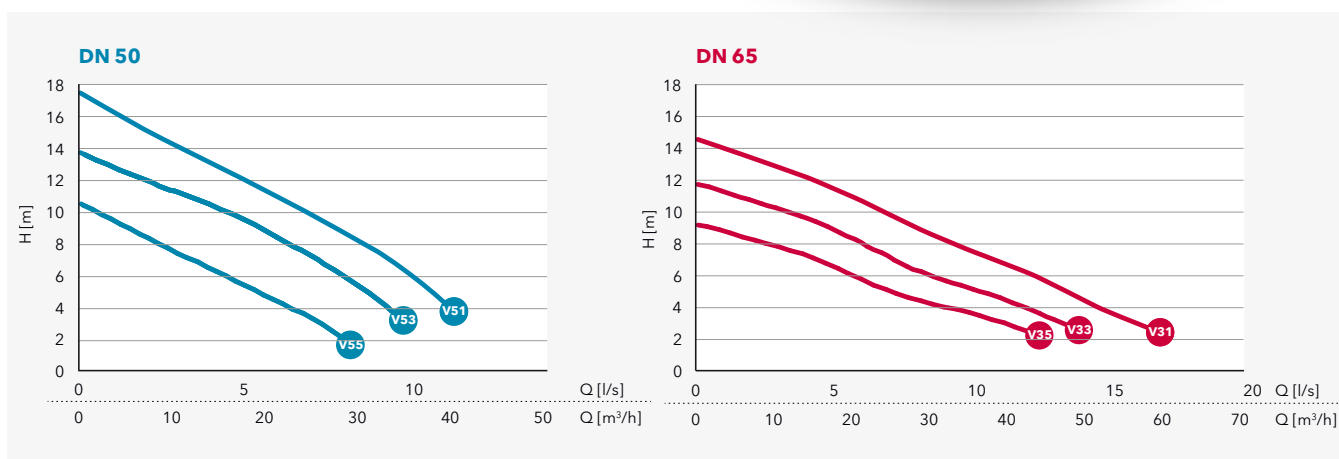
DN	Free-standing	Wet well
50	included	1310-50W

\* For more information, see page 6

# Steady™ 1310 Vortex



## Performance curves



## Selection table

Model	DN	Installation*	Pole	Freq (Hz)	Phase	Power (kW)	Curve no	Voltage	Cable	Order number**
1310H	50	W, T	2	50	3	2.4	V51, V53, V55	415	10	1310H-50-.253.----/10
1310M	65	X	2	50	3	2.4	V31, V33, V35	415	10	1310M-65-.253.----/10

\* W=Wet well only.  
T=Free-standing threaded outlet, only.  
X=Bare pump.

Pumps come standard with thermal contacts.  
\*\* For information on configuring the right order number, see page 7.

## Pump data

Model	1310H	1310M
Impeller Type	Vortex	Vortex
Outlet size (mm)	50	65
Weight (kg), with stand	34	40, 50
Pole	2	2
Insulation Class	F	F
Starts per hour	15	15

## Motor data

Voltage	415 V
Phase	3
Model	1310H/M
Starting Amps (A)	23
Full Load (A)	4.7
Full Load Power Factor	0.90
Connection	Y
Cable	7G1.5

## Material data

Impeller	grey cast iron
Pump housing	grey cast iron
Stator housing	grey cast iron
Shaft	stainless steel
Inner mechanical seal	carbon/aluminum oxide
Outer mechanical seal	cemented carbide/aluminum oxide
O-rings	nitrile
Cable sheathing	nitrile

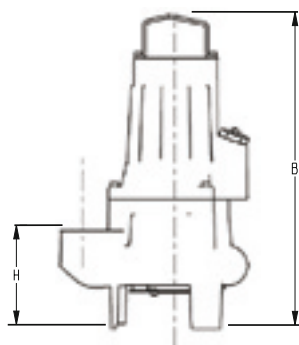
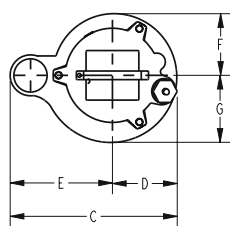
## Process data

Max submergence	20 m
Max fluid temp	40 C
pH range of pumped liquid	5.5 - 14

## Power cable data

Cable type (mm <sup>2</sup> )	7G1.5
Outer Diameter (mm)	16.2
Weight (kg/m)	0.33

## Pump dimensions (mm)



	1310H	1310M
A	N/A	N/A
B	503	503
C	309	410
D	119	119
E	190	291

	1310H	1310M
F	115	106
G	125	106
H	157	280
J	N/A	N/A
K	N/A	N/A

## Installation kit selection table\*

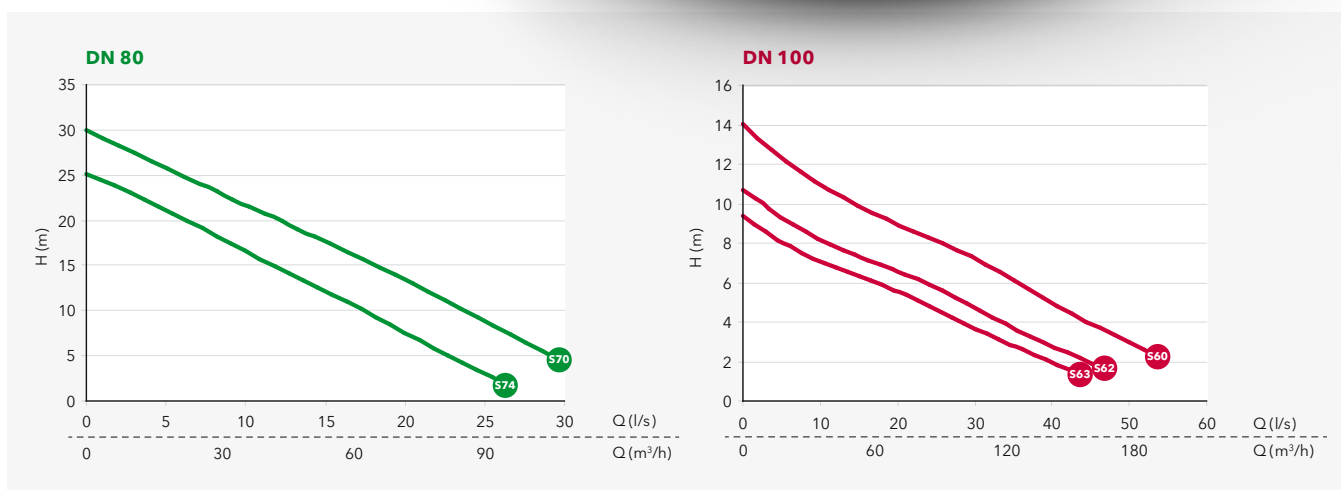
DN	Free-standing	Wet well	Replacement
50	included	1310-50W	included
65	1310-65H (hose) 1310-65T (threaded)	1310-65W	1310-65R

\* For more information, see page 6

# Steady™ 1315 Non-clog



## Performance curves



## Selection table

Model	DN	Installation*	Pole	Freq (Hz)	Phase	Power (kW)	Curve no	Voltage	Cable	Order number**
1315S	80	X	2	50	3	4.4	S70, S74	415	10	1315S-80-.253.....-/10
1315M	100	X	4	50	3	3.3	S60, S62, S63	415	10	1315M-100-.453.....-/10

\* X=Bare pump.

Pumps come standard with thermal contacts.

\*\* For information on configuring the right order number, see page 7.

## Pump data

Model	1315S	1315M
Impeller Type	Non-clog	Non-clog
Outlet size (mm)	80	100
Weight (kg), with stand	95, 109	120, 135
Pole	2	4
Insulation Class	F	F
Starts per hour	15	15

## Motor data

Voltage	415 V
Phase	3
Model	1315S   1315M
Starting Amps (A)	43   34
Full Load (A)	8.2   7.4
Full Load Power Factor	0.92   0.80
Connection	D   Y
Cable	7G1.5

## Material data

Impeller	grey cast iron
Pump housing	grey cast iron
Stator housing	grey cast iron
Shaft	stainless steel
Inner mechanical seal	carbon/aluminum oxide
Outer mechanical seal	cemented carbide/aluminum oxide
O-rings	nitrile
Cable sheathing	nitrile

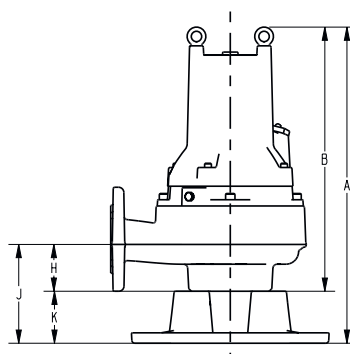
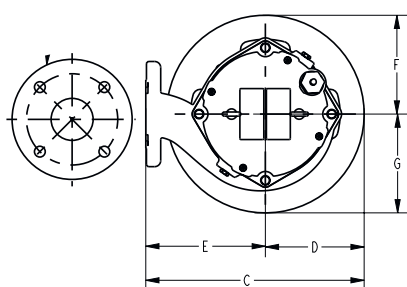
## Process data

Max submergence	20 m
Max fluid temp	40 C
pH range of pumped liquid	5.5 - 14

## Power cable data

Cable type (mm <sup>2</sup> )	7G1.5
Outer Diameter (mm)	16.2
Weight (kg/m)	0.33

## Pump dimensions (mm)



	1315S	1315M
A	608	624
B	508	524
C	420	475
D	190	190
E	230	285

	1315S	1315M
F	190	190
G	190	190
H	90	109
J	190	209
K	100	100

## Installation kit selection table\*

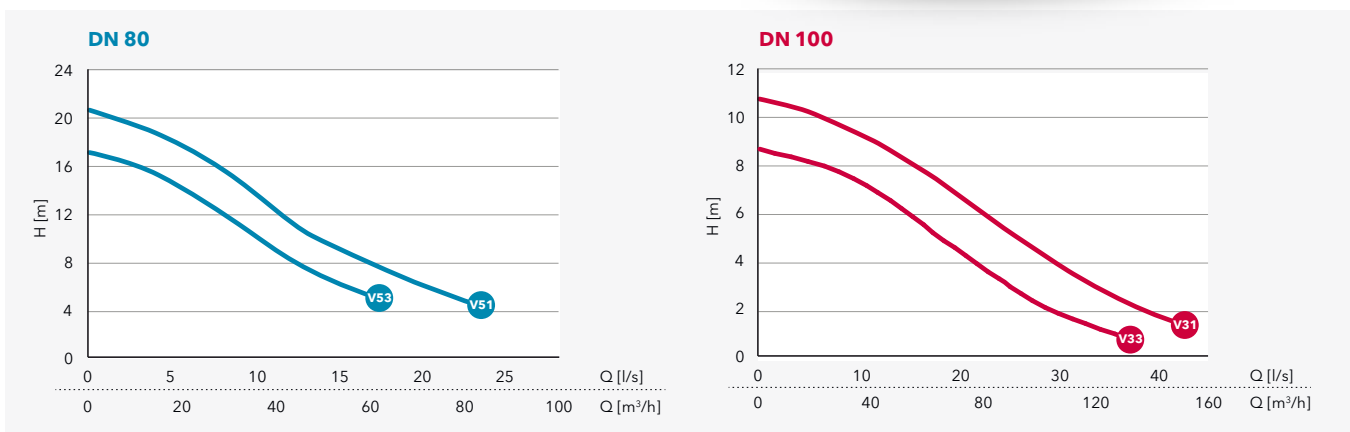
DN	Free-standing	Wet well	Replacement
80	1315-80H (hose) 1315-80T (threaded)	1315-80W	1315-80R
100	1315-100H (hose) 1315-100T (threaded)	1315-100W	1315-100R

\* For more information, see page 6

# Steady™ 1315 Vortex



## Performance curves



## Selection table

Model	DN	Installation*	Pole	Freq (Hz)	Phase	Power (kW)	Curve no	Voltage	Cable	Order number**
1315H	80	X	2	50	3	4.4	V51, V53	415	10	1315H-80X.253.-----/10
1315M	100	X	4	50	3	3.3	V31, V33	415	10	1315M-100X.453.-----/10

\* X=Bare pump.

Pumps come standard with thermal contacts.

\*\* For information on configuring the right order number, see page 7.

## Pump data

Model	1315H	1315M
Impeller Type	Vortex	Vortex
Outlet size (mm)	80	100
Weight (kg), with stand	85, 99	95, 108
Pole	2	4
Insulation Class	F	F
Starts per hour	15	15

## Motor data

Voltage	415 V
Phase	3
Model	1315H   1315M
Starting Amps (A)	43   34
Full Load (A)	8.2   7.4
Full Load Power Factor	0.92   0.80
Connection	D   Y
Cable	7G1.5

## Material data

Impeller	grey cast iron
Pump housing	grey cast iron
Stator housing	grey cast iron
Shaft	stainless steel
Inner mechanical seal	carbon/aluminum oxide
Outer mechanical seal	cemented carbide/aluminum oxide
O-rings	nitrile
Cable sheathing	nitrile

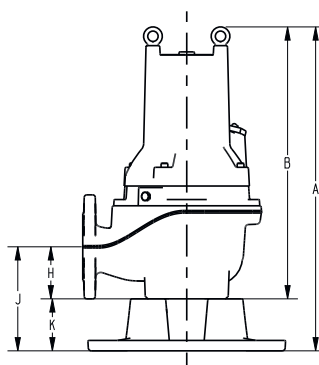
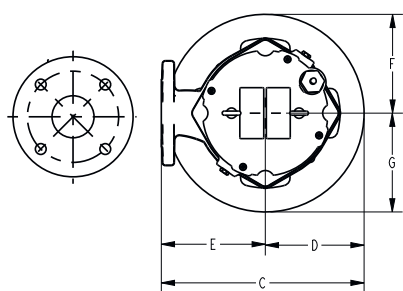
## Process data

Max submergence	20 m
Max fluid temp	40 C
pH range of pumped liquid	5.5 - 14

## Power cable data

Cable type (mm <sup>2</sup> )	7G1.5
Outer Diameter (mm)	16.2
Weight (kg/m)	0.33

## Pump dimensions (mm)



	1315H	1315M
A	625	673
B	525	573
C	392	415
D	190	190
E	202	225

	1315H	1315M
F	190	190
G	190	190
H	100	120
J	200	220
K	100	100

## Installation kit selection table\*

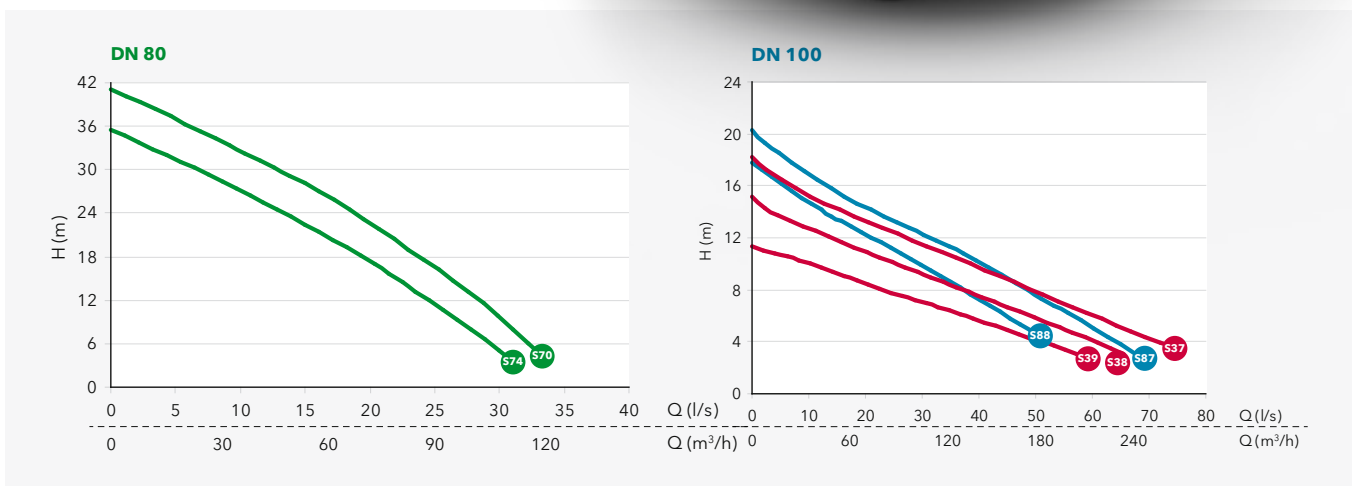
DN	Free-standing	Wet well	Replacement
80	1315-80H (hose) 1315-80T (threaded)	1315-80W	1315-80R
100	1315-100H (hose) 1315-100T (threaded)	1315-100W	1315-100R

\* For more information, see page 6

# Steady™ 1320 Non-clog



## Performance curves



## Selection table

Model	DN	Installation*	Pole	Freq (Hz)	Phase	Power (kW)	Curve no	Voltage	Cable	Order number**
1320S	80	X	2	50	3	7.5	S70, S74	415	10	1320S-80-.253-...../10
1320H	100	X	4	50	3	5.9	S87, S88	415	10	1320H-100-.453-...../10
1320M	100	X	4	50	3	5.9	S37, S38, S39	415	10	1320M-100-.453-...../10

\* X=Bare pump.

Pumps come standard with thermal contacts.

\*\* For information on configuring the right order number, see page 7.



## Pump data

Model	1320S	1320H	1320M
Impeller Type	Non-clog	Non-clog	Non-clog
Outlet size (mm)	80	100	100
Weight (kg), with stand	140, 150	160, 170	160, 170
Pole	2	4	4
Insulation Class	F	F	F
Starts per hour	15	15	15

## Motor data

Voltage	415 V
Phase	3
Model	1320S   1320H/M
Starting Amps (A)	111   63
Full Load (A)	14   13
Full Load Power Factor	0.85   0.78
Connection	D
Cable	7G1.5

## Material data

Impeller	grey cast iron
Pump housing	grey cast iron
Stator housing	grey cast iron
Shaft	stainless steel
Inner mechanical seal	carbon/cemented carbide
Outer mechanical seal	cemented carbide/cemented carbide
O-rings	nitrile
Cable sheathing	nitrile

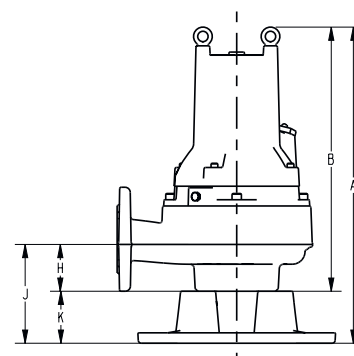
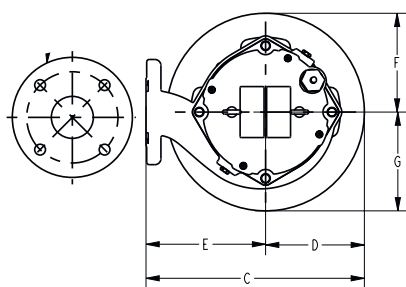
## Process data

Max submergence	20 m
Max fluid temp	40 C
pH range of pumped liquid	5.5 - 14

## Power cable data

Cable type (mm <sup>2</sup> )	7G1.5
Outer Diameter (mm)	16.2
Weight (kg/m)	0.33

## Pump dimensions (mm)



	1320S	1320H	1320M
A	670	692	670
B	570	592	596
C	450	523	498
D	190	213	198
E	260	310	310

	1320S	1320H	1320M
F	190	194	181
G	190	232	214
H	90	117	123
J	190	217	223
K	100	100	100

## Installation kit selection table\*

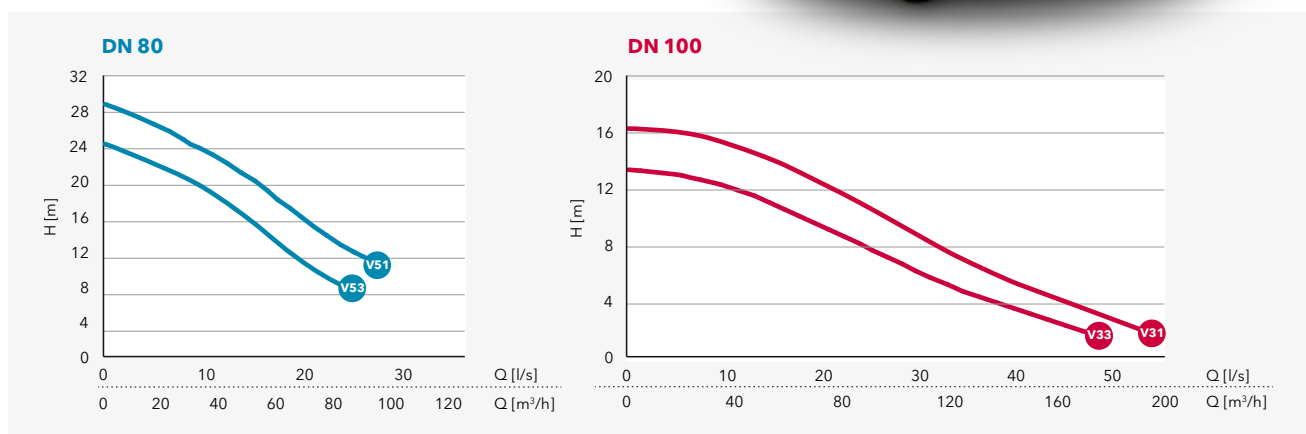
DN	Free-standing	Wet well	Replacement
80	1320-80H (hose) 1320-100T (threaded)	1320-80W	1320-80R
100	1320-100H (hose) 1320-100T (threaded)	1320-100W	1320-100R

\* For more information, see page 6

# Steady™ 1320 Vortex



Performance curves



## Selection table

Model	DN	Installation*	Pole	Freq (Hz)	Phase	Power (kW)	Curve no	Voltage	Cable	Order number**
1320H	80	X	2	50	3	7.5	V51, V53	415	10	1320H-80X.253.----/10
1320M	100	X	4	50	3	5.9	V31, V33	415	10	1320M-100X.453.----/10

\* X=Bare pump.

Pumps come standard with thermal contacts.

\*\* For information on configuring the right order number, see page 7.

## Pump data

Model	1320H	1320M
Impeller Type	Vortex	Vortex
Outlet size (mm)	80	100
Weight (kg), with stand	130, 143	140, 153
Pole	2	4
Insulation Class	F	F
Starts per hour	15	15

## Motor data

Voltage	415 V
Phase	3
Model	1320H   1320M
Starting Amps (A)	111   63
Full Load (A)	14   13
Full Load Power Factor	0.85   0.78
Connection	D
Cable	7G1.5

## Material data

Impeller	grey cast iron
Pump housing	grey cast iron
Stator housing	grey cast iron
Shaft	stainless steel
Inner mechanical seal	carbon/cemented carbide
Outer mechanical seal	cemented carbide/cemented carbide
O-rings	nitrile
Cable sheathing	nitrile

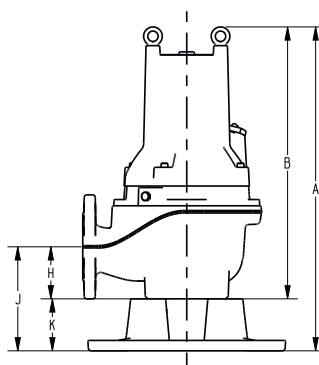
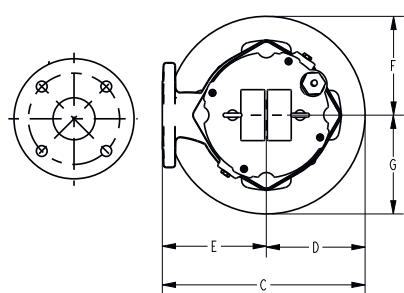
## Process data

Max submergence	20 m
Max fluid temp	40 C
pH range of pumped liquid	5.5 - 14

## Power cable data

Cable type (mm <sup>2</sup> )	7G1.5
Outer Diameter (mm)	16.2
Weight (kg/m)	0.33

## Pump dimensions (mm)



	1320H	1320M
A	710	774
B	610	674
C	400	435
D	190	190
E	210	245

	1320H	1320M
F	190	190
G	190	190
H	100	123
J	200	223
K	100	100

## Installation kit selection table\*

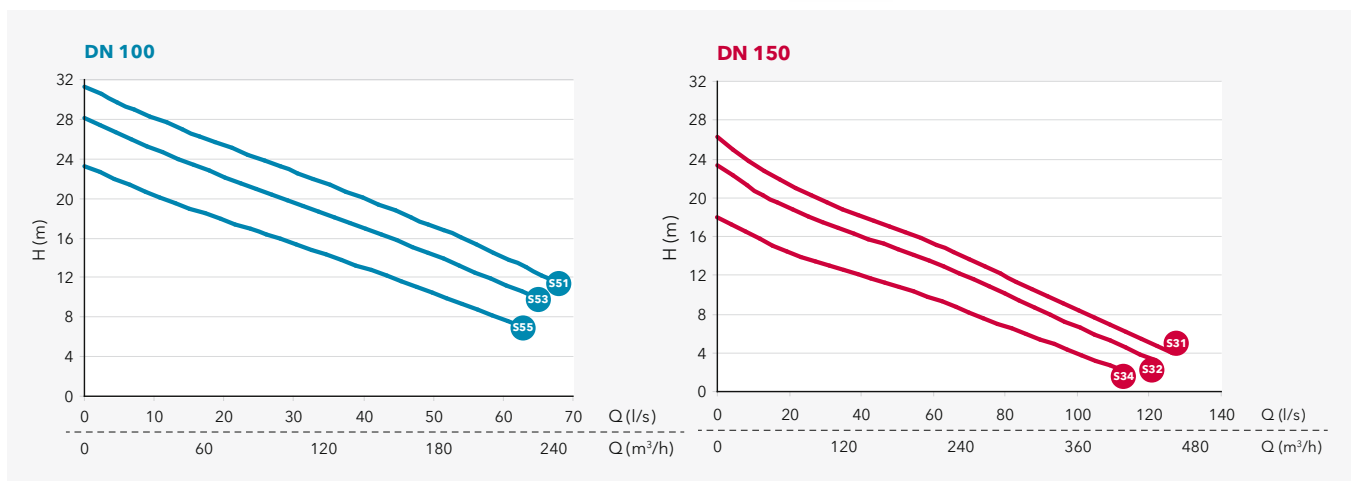
DN	Free-standing	Wet well	Replacement
80	1320-100H (hose) 1320-100T (threaded)	1320-100W	1320-100R
100	1320-150H (hose) 1320-100T (threaded)	1320-150W	1320-150R

\* For more information, see page 6

# Steady™ 1325 Non-clog



## Performance curves



## Selection table

Model	DN	Installation*	Pole	Freq (Hz)	Phase	Power (kW)	Curve no	Voltage	Cable	Order number**
1325H	100	X	4	50	3	13.5	S51, S53, S55	415	10	1325H-100-.453.....-/10
1325M	150	X	4	50	3	13.5	S31, S32, S34	415	10	1325M-150-.453.....-/10

\* X=Bare pump.

Pumps come standard with thermal contacts.

\*\* For information on configuring the right order number, see page 7.

## Pump data

Model	1325H	1325M
Impeller Type	Non-clog	Non-clog
Outlet size (mm)	100	150
Weight (kg), with stand	320, 335	320, 335
Pole	4	4
Insulation Class	F	F
Starts per hour	15	15

## Motor data

Voltage	415 V
Phase	3
Model	1325H/M
Starting Amps (A)	133
Full Load (A)	26
Full Load Power Factor	0.85
Connection	YD
Cable	7G2.5+2x1.5

## Material data

Impeller	grey cast iron
Pump housing	grey cast iron
Stator housing	grey cast iron
Shaft	stainless steel
Inner mechanical seal	carbon/cemented carbide
Outer mechanical seal	cemented carbide/cemented carbide
O-rings	nitrile
Cable sheathing	nitrile

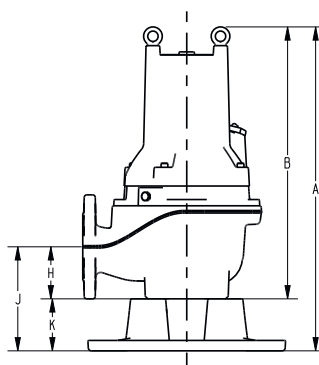
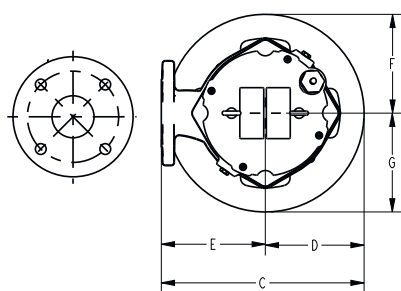
## Process data

Max submergence	20 m
Max fluid temp	40 C
pH range of pumped liquid	5.5 - 14

## Power cable data

Cable type (mm <sup>2</sup> )	7G2.5+2x1.5
Outer Diameter (mm)	22
Weight (kg/m)	0.60

## Pump dimensions (mm)



	1325H	1325M
A	752	759
B	632	659
C	531	550
D	201	220
E	330	330

	1325H	1325M
F	185	190
G	220	259
H	105	135
J	205	235
K	100	100

## Installation kit selection table\*

DN	Free-standing	Wet well	Replacement
100	1325-100H (hose) 1325-100T (threaded)	1325-100W	1325-100R
150	1325-150H (hose) 1325-150T (threaded)	1325-150W	1325-150R

\* For more information, see page 6

# Maintenance & repair kits

Prolong the lifetime of your Steady pump by utilizing our maintenance and repair kits. We have packaged everything you need into kits, making it even easier for you to overhaul the motor, replace a cable or impeller.



## **Steady cable kit**

The cable and cable entry are crucial components to keep the motor running and free of water. The Steady cable kit provides all parts needed to replace a cable and make the job as easy as possible.

Kit contents:

- Cable
- Cable sleeve unit
- Cable end-splice and lug

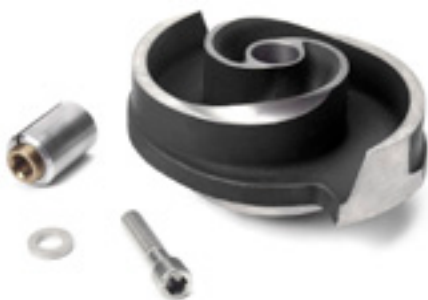


## **Steady motor kit**

The Steady Motor kit contains all the critical parts needed to perform an overhaul of the motor.

Kit contents:

- Bearings
- Mechanical seals
- O-rings



## **Steady impeller kit**

It is important that the impeller is in good condition to ensure reliability and good performance. The Steady impeller kit contains all parts needed to replace an impeller, including the adjustable sleeve, making it easy to mount the impeller in the optimal position.

Kit contents:

- Impeller
- Impeller sleeve/ key
- Screw and washer

# Right pump for your need



### Steady 1310 Non-clog

- Maximum flow: 15 l/s
- Maximum pressure: 22 m
- Outlet 50 mm
- Weight 35 kg



### Steady 1310 Vortex

- Max flow 17.5 l/s
- Max pressure 16.6 m
- Outlet 50 - 65 mm
- Weight 34 - 46 kg



### Steady 1315 Non-clog

- Maximum flow: 53 l/s
- Maximum pressure: 30 m
- Outlet 80 - 100 mm
- Weight 95 - 120 kg



### Steady 1315 Vortex

- Max flow 20.7 l/s
- Max Pressure 42.2 m
- Outlet 80 - 100 mm
- Weight 85 - 108 kg



### Steady 1320 Non-clog

- Maximum flow: 74 l/s
- Maximum pressure: 41 m
- Outlet 80 - 100 mm
- Weight 140 - 160 kg



### Steady 1320 Vortex

- Max flow 29 l/s
- Max Pressure 54.1 m
- Outlet 80 - 100 mm
- Weight 130 - 153 kg



### Steady 1325 Non-clog

- Maximum flow: 126 l/s
- Maximum pressure: 31 m
- Outlet 100 - 150 mm
- Weight 320 kg

# Xylem |'zīləm|

- 1) The tissue in plants that brings water upward from the roots;
- 2) A leading global water technology company.

We're 12,700 people unified in a common purpose: creating innovative solutions to meet our world's water needs. Developing new technologies that will improve the way water is used, conserved, and re-used in the future is central to our work. We move, treat, analyze, and return water to the environment, and we help people use water efficiently, in their homes, buildings, factories and farms. In more than 150 countries, we have strong, long-standing relationships with customers who know us for our powerful combination of leading product brands and applications expertise, backed by a legacy of innovation.

For more information on how Xylem can help you, go to [www.xylem.com](http://www.xylem.com)